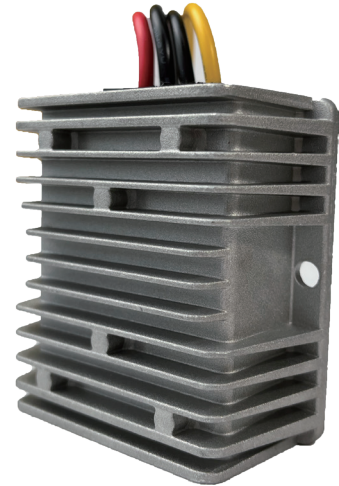


Isolated DC-DC Buck Converter

- Quality components, CE/RoHS certification specification design
- Full load aging test, full power, excellent performance, stable output
- Imported high-quality thermally conductive silicone potting, waterproof, dustproof, shockproof
- Cast aluminum shell, high efficiency heat dissipation, small size, simple installation
- Built-in over-current, low voltage, over-temperature and other protection functions
- Wide voltage input, up to 93% ~ 98% efficient conversion
- 12 months warranty service



Selection Rule

SC300	-	12 24	V	05	15
Isolated type	-	Input voltage 12/24V	V	Output voltage 5V	Output current

Voltage decimal points are marked with S

Selection Rule

SC300	-	0 100	V	12	10
Isolated type	-	Input voltage 100V	V	Output voltage 12V	Output current

Specification Parameter

12V 24V to 5V

Model	Specifications	Input voltage range	Rated input voltage	Output voltage	Rated current (customizable)	Output power
SC300-1224V0501	12V24Vto5V	9~36V	12V/24V	5V	1A	5W
SC300-1224V0502	12V24Vto5V	9~36V	12V/24V	5V	2A	12W
SC300-1224V0503	12V24Vto5V	9~36V	12V/24V	5V	3A	21W
SC300-1224V0504	12V24Vto5V	9~36V	12V/24V	5V	4A	32W
SC300-1224V0505	12V24Vto5V	9~36V	12V/24V	5V	5A	45W
SC300-1224V0508	12V24Vto5V	9~36V	12V/24V	5V	8A	80W
SC300-1224V0510	12V24Vto5V	9~36V	12V/24V	5V	10A	110W
SC300-1224V0515	12V24Vto5V	9~36V	12V/24V	5V	15A	180W
SC300-1224V0520	12V24Vto5V	9~36V	12V/24V	5V	20A	100W

24Vto12V

Model	Specifications	Input voltage range	Rated input voltage	Output voltage	Rated current (customizable)	Output power
SC300-0024V1201	24Vto12V	15~36V	24V	12V	1A	12W
SC300-0024V1202	24Vto12V	15~36V	24V	12V	2A	24W
SC300-0024V1203	24Vto12V	15~36V	24V	12V	3A	36W
SC300-0024V1204	24Vto12V	15~36V	24V	12V	4A	48W
SC300-0024V1205	24Vto12V	15~36V	24V	12V	5A	60W
SC300-0024V1208	24Vto12V	15~36V	24V	12V	8A	96W
SC300-0024V1210	24Vto12V	15~36V	24V	12V	10A	120W

36V/48Vto5V

Model	Specifications	Input voltage range	Rated input voltage	Output voltage	Rated current (customizable)	Output power
SC300-3648V0501	36V/48Vto5V	30~60V	36V/48V	5V	1A	5W
SC300-3648V0502	36V/48Vto5V	30~60V	36V/48V	5V	2A	12W
SC300-3648V0503	36V/48Vto5V	30~60V	36V/48V	5V	3A	21W
SC300-3648V0504	36V/48Vto5V	30~60V	36V/48V	5V	4A	32W
SC300-3648V0505	36V/48Vto5V	30~60V	36V/48V	5V	5A	45W
SC300-3648V0508	36V/48Vto5V	30~60V	36V/48V	5V	8A	80W
SC300-3648V0510	36V/48Vto5V	30~60V	36V/48V	5V	10A	110W
SC300-3648V0515	36V/48Vto5V	30~60V	36V/48V	5V	15A	180W
SC300-3648V0520	36V/48Vto5V	30~60V	36V/48V	5V	20A	100W

60V/72V/80Vto5V

Model	Specifications	Input voltage range	Rated input voltage	Output voltage	Rated current (customizable)	Output power
SC300-6080V0501	60V/72V/80Vto5V	50~100V	60V/72V/80V	5V	1A	5W
SC300-6080V0502	60V/72V/80Vto5V	50~100V	60V/72V/80V	5V	2A	12W
SC300-6080V0503	60V/72V/80Vto5V	50~100V	60V/72V/80V	5V	3A	21W
SC300-6080V0504	60V/72V/80Vto5V	50~100V	60V/72V/80V	5V	4A	32W
SC300-6080V0505	60V/72V/80Vto5V	50~100V	60V/72V/80V	5V	5A	45W
SC300-6080V0508	60V/72V/80Vto5V	50~100V	60V/72V/80V	5V	8A	80W
SC300-6080V0510	60V/72V/80Vto5V	50~100V	60V/72V/80V	5V	10A	110W
SC300-6080V0515	60V/72V/80Vto5V	50~100V	60V/72V/80V	5V	15A	180W
SC300-6080V0520	60V/72V/80Vto5V	50~100V	60V/72V/80V	5V	20A	100W

100Vto5V

Model	Specifications	Input voltage range	Rated input voltage	Output voltage	Rated current (customizable)	Output power
SC300-0100V0501	100Vto5V	75V~150V	100V	5V	1A	5W
SC300-0100V0502	100Vto5V	75V~150V	100V	5V	2A	12W
SC300-0100V0503	100Vto5V	75V~150V	100V	5V	3A	21W
SC300-0100V0504	100Vto5V	75V~150V	100V	5V	4A	32W
SC300-0100V0505	100Vto5V	75V~150V	100V	5V	5A	45W
SC300-0100V0508	100Vto5V	75V~150V	100V	5V	8A	80W
SC300-0100V0510	100Vto5V	75V~150V	100V	5V	10A	110W
SC300-0100V0515	100Vto5V	75V~150V	100V	5V	15A	180W
SC300-0100V0520	100Vto5V	75V~150V	100V	5V	20A	100W

36V/48Vto12V

Model	Specifications	Input voltage range	Rated input voltage	Output voltage	Rated current (customizable)	Output power
SC300-3648V1205	36V/48Vto12V	30~60V	36V/48V	12V	5A	60W
SC300-3648V1208	36V/48Vto12V	30~60V	36V/48V	12V	8A	96W
SC300-3648V1210	36V/48Vto12V	30~60V	36V/48V	12V	10A	120W

60V/72V/80Vto12V

Model	Specifications	Input voltage range	Rated input voltage	Output voltage	Rated current (customizable)	Output power
SC300-6080V1205	60V/72V/80Vto12V	50~100V	60V/72V/80V	12V	5A	60W
SC300-6080V1208	60V/72V/80Vto12V	50~100V	60V/72V/80V	12V	8A	96W
SC300-6080V1210	60V/72V/80Vto12V	50~100V	60V/72V/80V	12V	10A	120W

100Vto12V

Model	Specifications	Input voltage range	Rated input voltage	Output voltage	Rated current (customizable)	Output power
SC300-0100V1205	100Vto12V	75V~150V	100V	12V	5A	60W
SC300-0100V1208	100Vto12V	75V~150V	100V	12V	8A	96W
SC300-0100V1210	100Vto12V	75V~150V	100V	12V	10A	120W

36V/48Vto24V

Model	Specifications	Input voltage range	Rated input voltage	Output voltage	Rated current (customizable)	Output power
SC300-3648V2415	36V/48Vto24V	30~60V	36V/48V	24V	15A	360W
SC300-3648V2420	36V/48Vhc24V	30~60V	36V/48V	24V	20A	480W

60V/72V/80Vto24V

Model	Specifications	Input voltage range	Rated input voltage	Output voltage	Rated current (customizable)	Output power
SC300-6080V2415	60V/72V/80Vhc24V	50~100V	60V/72V/80V	24V	15A	360W
SC300-6080V2420	60V/72V/80Vhc24V	50~100V	60V/72V/80V	24V	20A	480W

100Vto24V

Model	Specifications	Input voltage range	Rated input voltage	Output voltage	Rated current (customizable)	Output power
SC300-0100V2415	100Vto24V	75V~150V	100V	24V	15A	360W
SC300-0100V2420	100Vto24V	75V~150V	100V	24V	20A	480W

Type: Isolation Buck Converter

Efficiency: >86%

Protection Features: Over-current, over-voltage, over-temperature protection

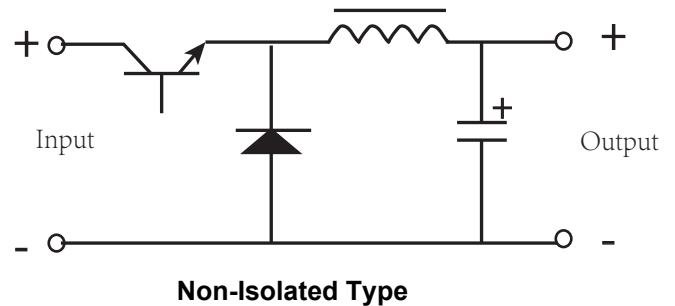
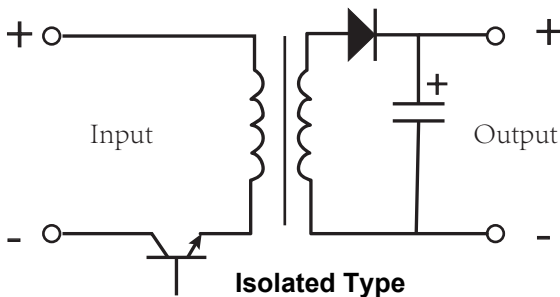
Installation Wire Length: 14cm

Waterproof Rating: IP67/IP68

Dimensions and Weight: 1-3A (plastic case 58*40.5*22mm) 100g, 3-12A (cast aluminum 74*74*32mm) 260g, 15-20A (cast aluminum 118*87*40mm) 370g

(dimensions are for reference only, please contact our sales for details)

The distinction between isolated and non-isolated types



The non-isolated input negative is directly connected to the output negative without isolation.